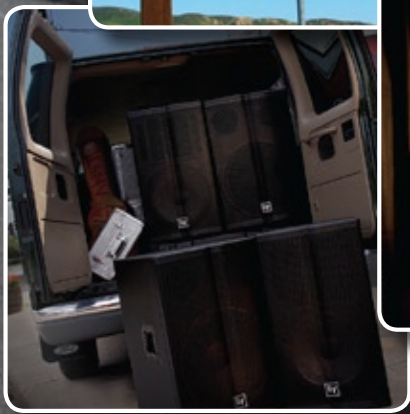
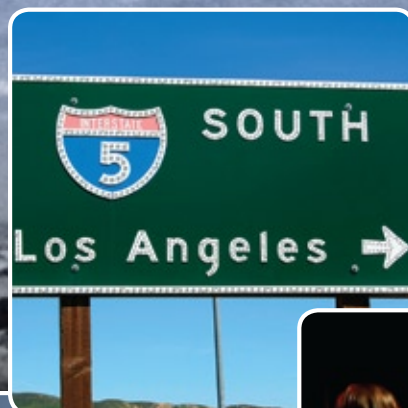


EV Electro-Voice®

Tour X





Ready for the road

On the road our Tour X rig takes all the abuse we can throw at it, but it always sounds great. Whether jammed in the back of the van or kicked around onstage, it's built to handle the realities of the road.

Electro-Voice PA systems provide sound for the world's biggest tours and events **...including yours.**

Sir Paul McCartney's Quebec City 400th Anniversary Celebration – the largest concert event in Canadian history– with an audience of over 250,000. Country superstar Kenny Chesney's summer tours, attracting over one million fans annually. Live Earth – a mass global audience of millions attended live concerts around the world. The world renowned Glastonbury Festival, averaging over 250,000 people per year. The Foo Fighters record breaking back-to-back shows at Wembley Stadium, London. All these shows relied upon Electro-Voice sound systems. And the list goes on...

We know you take your sound just as seriously. That's why the experience we've gained from decades in the business makes its way into every loudspeaker we build, including the new Tour X.

Tour X embodies the same Electro-Voice engineering excellence and aesthetic design found in our world class tour systems. Its form is seamlessly integrated into practical, functional elements that make a bold statement about its multi-application purpose and breakthrough performance.

A host of innovative features and patent pending designs make Tour X the most exciting loudspeaker series available today...

Features



“Backbone Grille”

This design is so special that it has a patent pending. Unique aesthetics that stand out in the crowd are only half the story: the real functionality of this design is the strength advantage it has over standard grille designs. Much like the arc of a bridge, the curved structure of this grille is highly damage resistant.



Angled Input Panel

Not content to buy an off-the-shelf input panel, we designed and tooled our own. The angle allows the loudspeaker to be placed much closer to boundaries, and boasts an extra-wide design so that larger hands can manipulate even the most stubborn of connectors.



Ergonomic Handles

Again, why use the same off-the-shelf parts that every other loudspeaker manufacturer uses? Ultra-sonically welded to eliminate the annoying sound of air leaks often associated with cheaper products, this new handle design is both extremely comfortable and highly functional.



Breakthrough SMX Woofers

Electro-Voice engineers have shattered the limitations traditionally associated with woofer design. New proprietary modeling, simulation, and 3D laser verification tools have enabled us to achieve linearity in the three critical domains: electric, magnetic, and suspension. The result is an efficient, well-behaved, high-output woofer with absolutely inaudible distortion. An industry first.

Load in

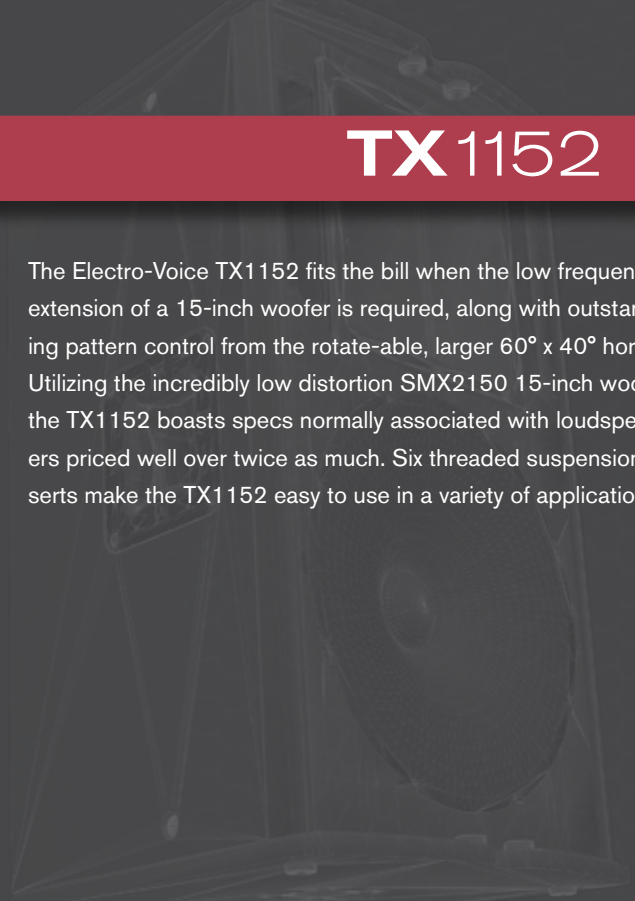
...or how to make BIG sound fit into a small van!
Though these speakers can fill a small club with superb sound, they're light and compact enough to slide in between the guitarist's Twin Reverb and the bass player's monster 8x10 cab.





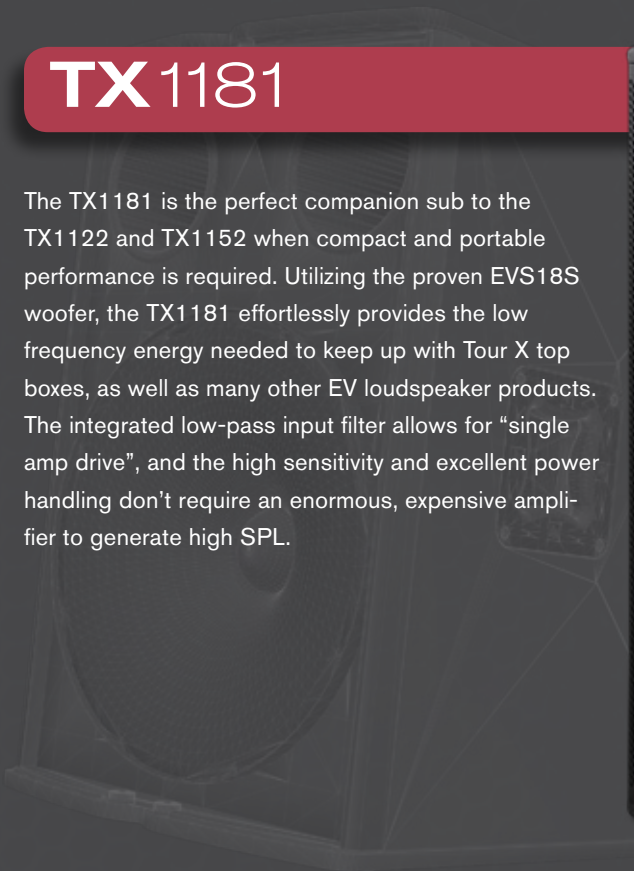
TX1152

The Electro-Voice TX1152 fits the bill when the low frequency extension of a 15-inch woofer is required, along with outstanding pattern control from the rotate-able, larger 60° x 40° horn. Utilizing the incredibly low distortion SMX2150 15-inch woofer, the TX1152 boasts specs normally associated with loudspeakers priced well over twice as much. Six threaded suspension inserts make the TX1152 easy to use in a variety of applications.



TX1181

The TX1181 is the perfect companion sub to the TX1122 and TX1152 when compact and portable performance is required. Utilizing the proven EVS18S woofer, the TX1181 effortlessly provides the low frequency energy needed to keep up with Tour X top boxes, as well as many other EV loudspeaker products. The integrated low-pass input filter allows for "single amp drive", and the high sensitivity and excellent power handling don't require an enormous, expensive amplifier to generate high SPL.





Sheer sonic horsepower

Being onstage with Tour X is a rush. The audience can hear every note and feel the true dynamic of our show. Maximum punch and maximum power. But, most importantly, our music comes through.

TX2152

The Electro-Voice TX2152 excels where all other competitive dual 15-inch loudspeakers fail - transient detail. The secret is the combination of dual SMX2150 low distortion woofers with an integrated analog crossover utilizing elliptical filters that achieve 36dB per octave slopes at the crossover frequency. The result is crossover performance that rivals, or exceeds, that of many electronic DSP devices and bi-amping. To keep up with all this output, the TX2152 is the only Tour X model that employs the neodymium ND2 compression driver found in EV small and medium size line arrays. The TX2152 also benefits from the outstanding pattern control of the rotate-able, larger 60° x 40° horn. Six threaded inserts allow the TX2152 to be suspended in applications where floor space is limited, but high output is required.



TX2181

When powerful low frequency reproduction is required, the TX2181 delivers. Ideal as the companion sub to the TX2152 in a two subs to one top ratio, with the EV DC-One handling crossover and processing duties, the TX2181 makes excellent use of its dual EVS18S woofers to provide all the low end necessary for a truly high-end professional rig. In addition, the TX2181 works as an outstanding addition to a variety of other EV loudspeaker products. High sensitivity and outstanding power handling enable the TX2181 to produce high output without a huge amplifier.



Load out

The drummer's busy tearing down his kit. The singer's off doing who knows what. The bass player had to make an "emergency phone call." And I'm left to pick up the pieces, literally.

Good thing our Tour X monitors are so light and easy to carry.





TX1122FM

TX1152FM

An undeniable combination of functional good looks, compact design and engineering breakthroughs, Tour X FM will redefine the world of stage monitors for years to come. Harkening back to the globally accepted EV FM series, the TX1122FM and TX1152FM take that legacy and advance it with a healthy dose of innovative Electro-Voice engineering. The most notable innovation is the split baffle design with patent pending SST

(Signal Synchronized Transducers) technology. A split baffle creates two very important benefits: moving the acoustic origins of the compression driver and woofer close together, and the split in the baffle becomes the port, allowing the entire enclosure to become much more compact. The result is "signal synchronized" with near perfect phase summation!

Ready for action, anywhere

After the show? Time to unwind with some new friends at the best Karaoke place in town. Kicking out some classic rock through the house Tour X system. Doesn't matter where you use them—these things always deliver

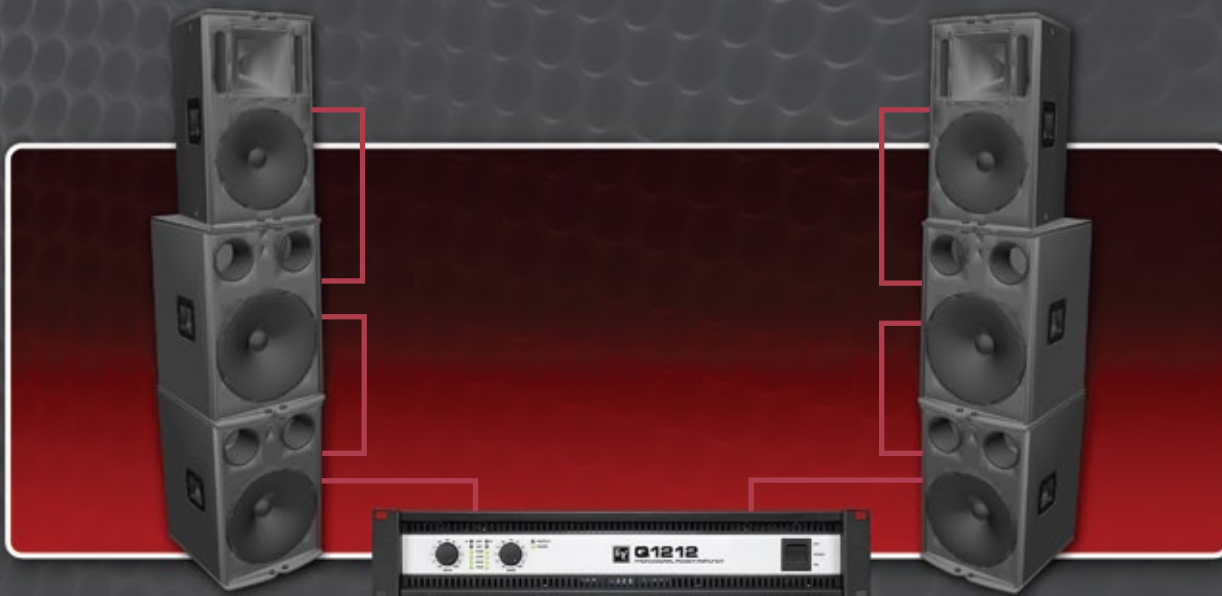
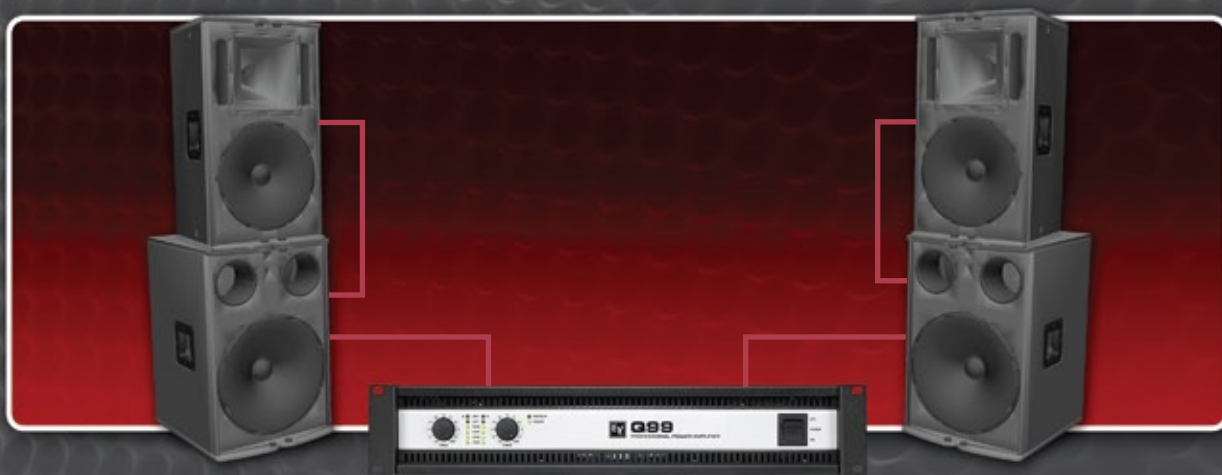


TX1122

The Electro-Voice TX1122 is truly designed to be the compact over-achiever of the Tour X family. Employing the same space saving 90° x 50° horn as the FM models and the incredibly low distortion SMX2120 12-inch woofer, the TX1122 will astound you with performance that blows away competitive 15-inch two-ways. Equipped with six threaded suspension inserts, the TX1122 is a uniquely versatile loudspeaker.



Single Amp Drive



Bi-Amp Drive



Tour X

Specifications

	TX1122	TX1152	TX2152	TX1181	TX2181	TX1122FM	TX1152FM
Power handling	500W cont.; 2000W peak	500W cont.; 2000W peak	1000W cont.; 4000W peak	500W cont.; 2000W peak	1000W cont.; 4000W peak	500W cont.; 2000W peak	500W cont.; 2000W peak
sensitivity	97 dB; 130 dB maximum SPL	100 dB; 133 dB maximum SPL	103 dB; 139 dB maximum SPL	100 dB; 132 dB maximum SPL	103 dB; 138 dB maximum SPL	98 dB; 131 dB maximum SPL	100 dB; 133 dB maximum SPL
impedance	8Ω	8Ω	4Ω	8Ω	4Ω	8Ω	8Ω
coverage pattern	90° x 50°	60° x 40° rotatable	60° x 40° rotatable			90° x 50°	90° x 50°
features	Six 3/8" thread- ed suspension points	Six 3/8" thread- ed suspension points	Six 3/8" thread- ed suspension points	Optional TX-W1 wheel kit	Optional TX-W1 wheel kit	Patent-pending Offset Baffle design	Patent-pending Offset Baffle design
weight	20.2 kg (44.5 lbs)	27.8 kg (61.2 lbs)	42.8 kg (94.3 lbs)	33.8 kg (74.5 lbs)	56.1 kg (123.5 lbs)	19.8 kg (43.7 lbs.)	23.5 kg (51.9 lbs.)

Bosch Communications Systems

Americas—
Headquarter Americas
Telex Communications, Inc.
12000 Portland Ave South,
Burnsville, MN 55337, USA
USA—Ph: 1-800-392-3497
Fax: 1-800-955-6831

Canada—Ph: 1-866-505-5551
Fax: 1-866-336-8467

Latin America—
Ph: 1-952-887-5532
Fax: 1-952-736-4212

Europe, Africa & Middle-East
Headquarters EMEA
EVI Audio GmbH
Hirschberger Ring 45,
94315 Straubing, Germany
Phone: +49 9421 706-0,
Fax: +49 9421 706-265

France: EVI Audio France S.A.,
Parc de Courcerin,
Allée Lech Walesa,
F 77185 Lognes, France
Phone: +33 1-6480-0090
Fax: +33 1-6006-5103

UK: Shuttlesound,
4 The Willows Centre,
Willow Lane, Mitcham,
Surrey CR4 4NX, UK
Phone: +44 208 646 7114
Fax: +44 208 254 5666

Asia & Pacific Rim
Headquarter Asia
Telex Communications (SEA)
Pte Ltd
38C Jalan Pemimpin
Singapore 577180
Tel: (65) 6319 0616
Fax: (65) 6319 0620

Japan: EVI Audio Japan, Ltd
5-3-8 Funabashi, Setagaya-ku,
Tokyo 156-0055
Tel: +81 (3) 5316-5021
Fax: +81 (3) 5316-5031

Hong Kong: Telex EVI Audio
(Hong Kong) Ltd.
Room 508-509, 5/F,
Topsail Plaza
11 On Shum Street
Shek Mun, Shatin HK
Phone: +852 2351-3628,
Fax: +852 2351-3329

Shanghai: Telex EVI Audio
(Shanghai) Co., Ltd.
Room 3105-3109,
Tower 1 Office Building,
218 Tian Mu Xi Rd.,
Shanghai, China
Postal Code: 200070
Tel: +86 21-6317-2155
Fax : +86 21-6317-3025