



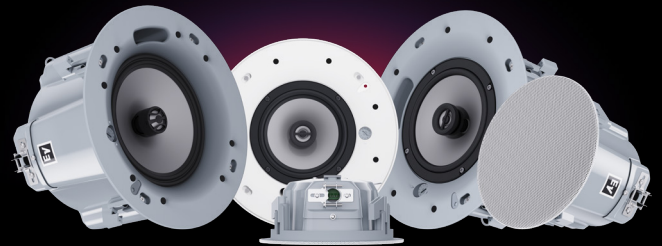
Electro-Voice

# NEXT-GENERATION EVID CEILING SPEAKERS

SUPERIOR CEILING SOUND, SIMPLIFIED



## EVID-C **G2**



## EVID-EC

- The next generation of the successful EVID-C series ceiling speaker series features 12 new models.
- Including seven "C" standard versions and five "EC" entry versions.
- Providing mix-and-match price/performance options tailored to precisely address the audio requirements of each area in an installation.

### SIMPLE, FAST AND SAFE INSTALLATION

The EVID-C-G2 models feature a new SwiftLock mounting mechanism. It supports quick, precise and secure attachment to the ceiling with a simple push-and-lock mechanism for hassle-free installation or replacement.



### DESIGNED WITH THE INTEGRATOR IN MIND

The easy-access front-baffle wattage tap and side-access terminal blocks make adjustment and connection simpler than ever. All models feature easy-attach magnetic grilles.



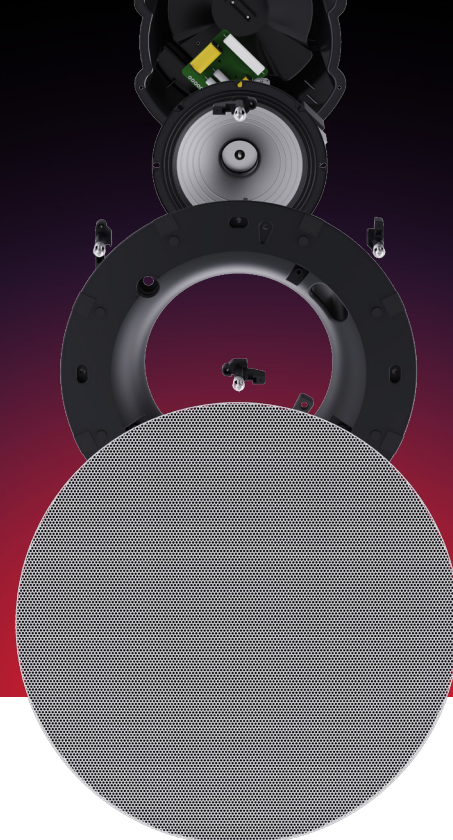
Learn more at [electrovoice.com](https://electrovoice.com)

Information in this document is preliminary and subject to change without notice. All trademarks are the copyrights of their respective owners. ©2024 Bosch Security Systems, LLC

# SUPERIOR AUDIO WITH STREAMLINED AESTHETICS

All models benefit from Electro-Voice's patented SST (Signal Synchronized Transducers) technology – a patented approach to time-aligning the low- and high-frequency transducers that allows a larger waveguide to fit inside a more compact enclosure, resulting in enhanced acoustic performance and pattern control for exceptional full-range intelligibility. Shallow profiles allow the speakers to fit into tighter spaces, with no compromises in sound quality.

Standardized outside and cut-out diameters add to the integrator-friendly feature set. The new models expand on the same-diameter models introduced with the previous EVID-C series, adding to the standard 11" diameter option with new 7" and 13" diameter options to ensure more consistent appearance across multi-model installations.



## EVID-C-G2

SAP	CTN	Family name	Short description
F.01U.417.779	EVID-C4.2-G2	EVID-C-G2	Ceiling speaker 4" 70/100V white
F.01U.417.780	EVID-C4.2LP-G2	EVID-C-G2	Ceiling speaker 4" 70/100V low-profile white
F.01U.417.781	EVID-C6.2-G2	EVID-C-G2	Ceiling speaker 6.5" 70/100V white
F.01U.417.782	EVID-C6.2LP-G2	EVID-C-G2	Ceiling speaker 6.5" 70/100V low-profile white
F.01U.417.783	EVID-C8.2-G2	EVID-C-G2	Ceiling speaker 8" 70/100V white
F.01U.417.784	EVID-C8.2HC-G2	EVID-C-G2	Ceiling speaker 8" 70/100V high ceiling white
F.01U.417.785	EVID-C8.1S-G2	EVID-C-G2	Ceiling subwoofer 8" 70/100V white

## EVID-EC

SAP	CTN	Family name	Short description
F.01U.417.786	EVID-EC3.1	EVID-EC	Ceiling speaker 3" 70/100V white
F.01U.417.787	EVID-EC4.2	EVID-EC	Ceiling speaker 4" 70/100V low-profile white
F.01U.417.788	EVID-EC6.2	EVID-EC	Ceiling speaker 6.5" 70/100V white
F.01U.417.789	EVID-EC6.2E	EVID-EC	Ceiling speaker 6.5" 70/100V EVAC white
F.01U.417.790	EVID-EC8.2	EVID-EC	Ceiling speaker 8" 70/100V white

## ACCESSORIES

SAP	CTN	Family name	Short description
F.01U.420.258	C-RG-S-BK	EVID small black grille	Round, magnetic grille, small, black
F.01U.420.259	C-RG-M-BK	EVID medium black grille	Round, magnetic grille, medium, black
F.01U.420.260	C-RG-L-BK	EVID large black grille	Round, magnetic grille, large, black
F.01U.420.261	C-SQ-M-WH1	EVID medium square grille	Square, magnetic grille, medium, white



Learn more at [electrovoice.com](https://electrovoice.com)

Information in this document is preliminary and subject to change without notice. All trademarks are the copyrights of their respective owners. ©2024 Bosch Security Systems, LLC